



District 202 Budget

2009-2010 Overview

“The Bottom Line”

- **Protecting our Investment in Classrooms, despite ongoing growth, dwindling revenue**
 - Maintained focus on education resources in 2009-10
 - Reduced deficit spending by \$5.0 Million for 2009-10
- **Revenue Problem not a Spending Problem**
 - Expenses Will Continue to Increase –
 - 600? New Students in 2009-10 or \$5.5 million lag in revenue
 - Staffing & Benefits costs increase by average of 3.8% or \$6.9Million
 - Historical data shows district has under spent state average
- **Short Term Budget Goal-Controlling What We Can**
- **Long Term Budget Goal- Eliminating the Operational Deficit**

Cost Saving Measures

- *Fall 2008 -Reconfigure Staffing Patterns - \$370,000*
- *Spring 2009 - Deficit Reduction - \$5 million*
- *Other Recent Initiatives*
 - *Instructional Resources - \$3 million/2 years*
 - *Lower Health Care Broker Fees - \$230,000*
 - *Renegotiated Custodial Supplies - \$383,000*
 - *Refinanced Bonds - \$350,000*
 - *Renegotiated CE - \$86,400 / 5 years*
- *New/Pending Initiatives*
 - *Reduce staff travel*
 - *Reduce Building Allocations by 10 %*
 - *Adjust Admin/Teacher-Per Pupil Ratio*

2008-09 Operating Funds Deficit

- **Recap of 2008-09 Revenue and Expenditures**
 - **Projected deficit spending** **-\$8.7 million**
 - Revenue shortfall in 2008-09 **-\$5.7 million**
 - Reduced Expenditures in 2008-09 **+\$0.6 million**
 - **Adjusted deficit of** **-\$13.8 million**
 - Permanent transfers of **\$12.3 million**
 - **Actual deficit spending 2008-09** **-\$1.5 million**

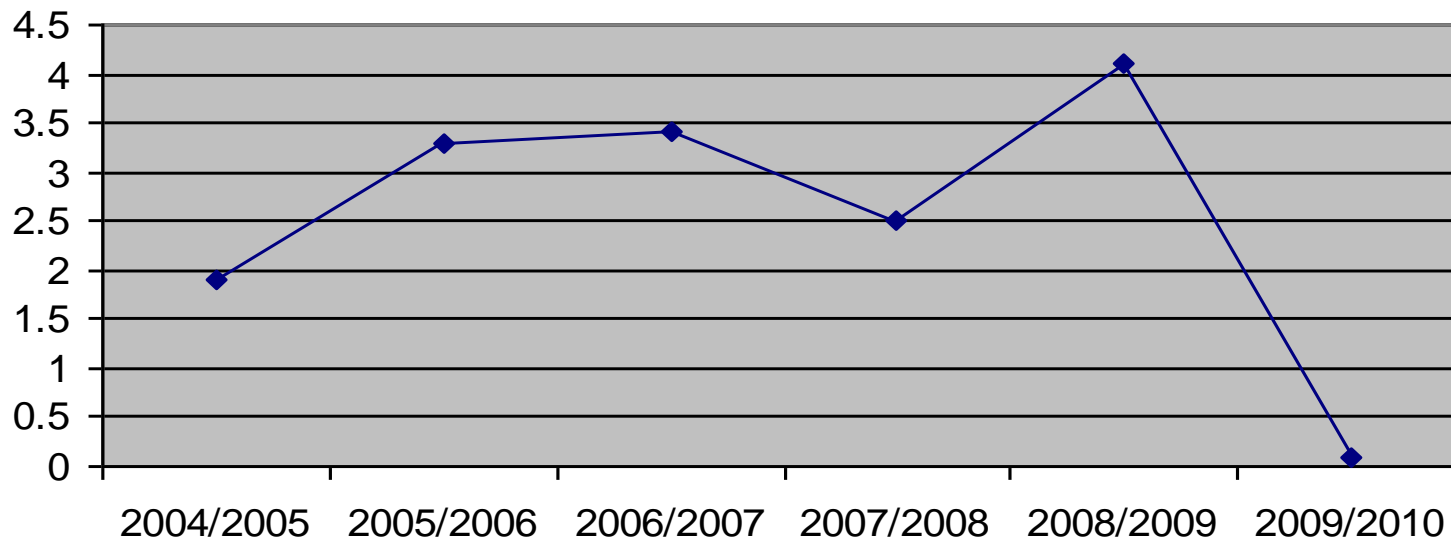
Putting It In Perspective

- Fundamental Problems with Illinois Funding System
 - CPI/Tax Cap does not mirror true cost
 - Lag in General State Aid(based on prior year ADA)
 - Lag in Categorical Funds(based on prior year expenditures)
 - Property Tax base is disproportionately weighted on residences
- Unstable Funding Base
 - Categorical Aid cut by \$1.4 Million
 - Fast Growth Grant Eliminated -\$2,100,000
 - Riverboat Money Eliminated -\$487,000
 - State Textbook Program Eliminated -\$500,000
 - Fed. Stimulus Money is “One Time Money”-\$1.7 million

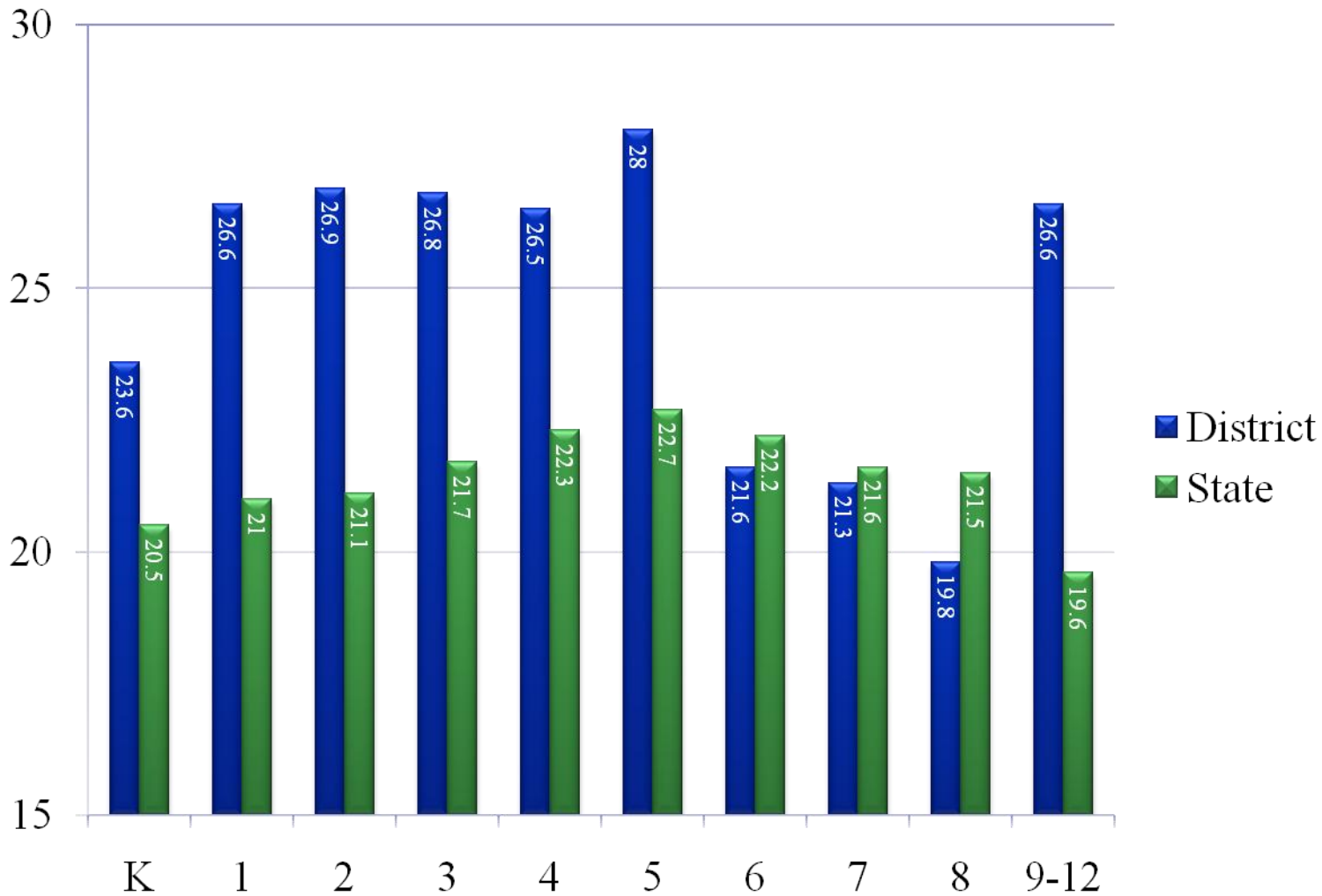
Property Tax Caps (Ed, O&M, Tran)

- Rate of growth in school property taxes is limited to the lesser of the CPI or 5%

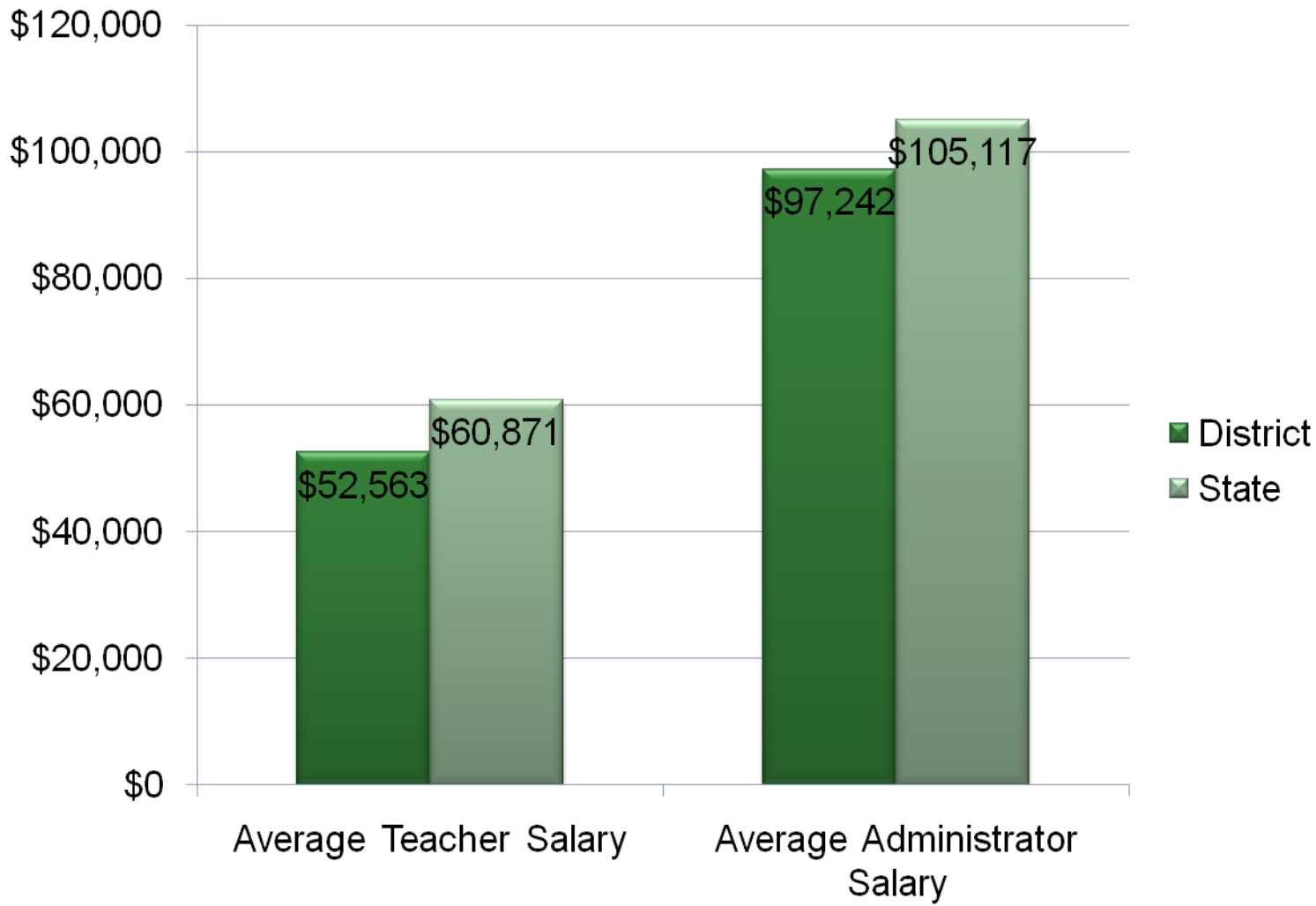
Consumer Price Index - 2004 to 2009



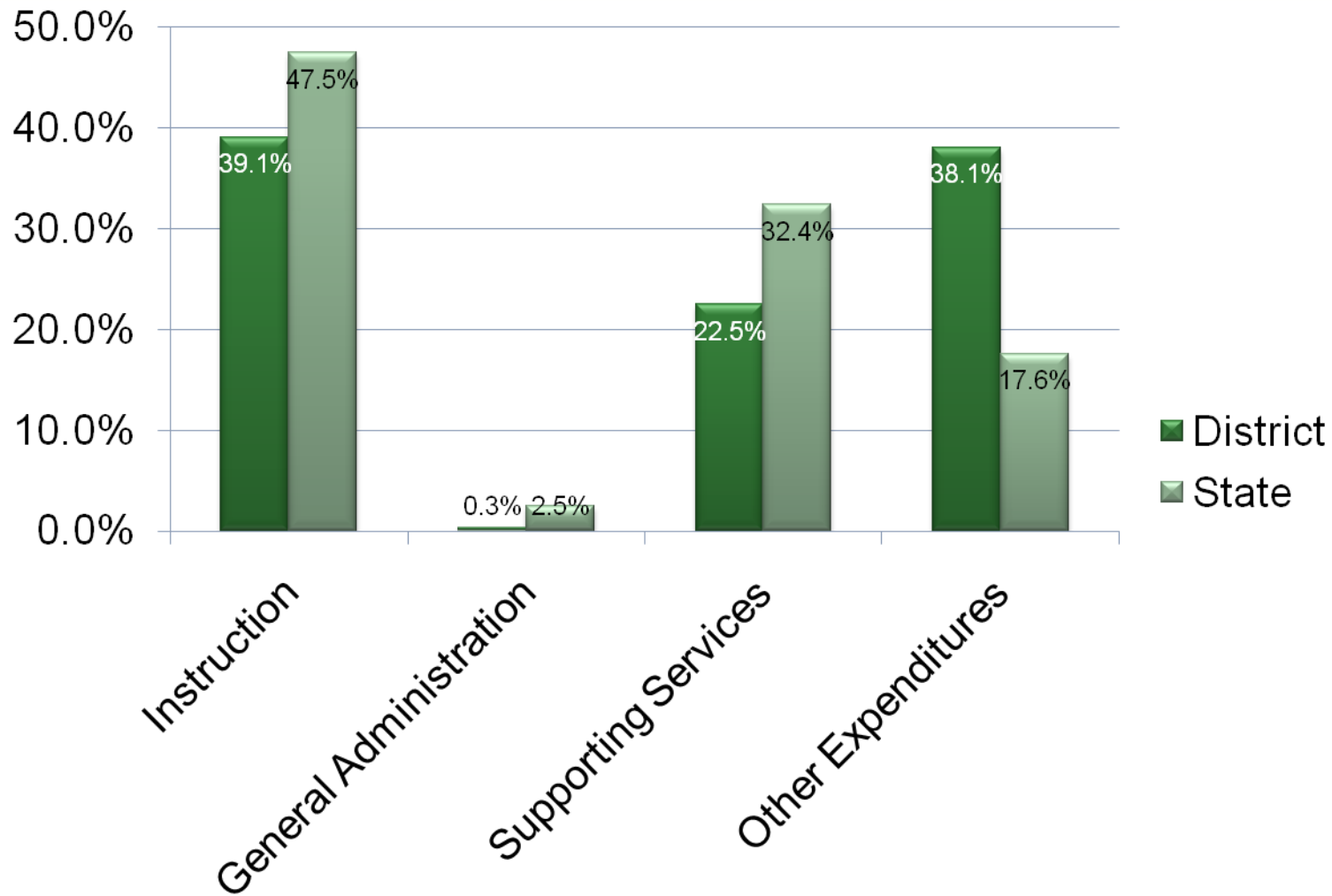
Average Class Size



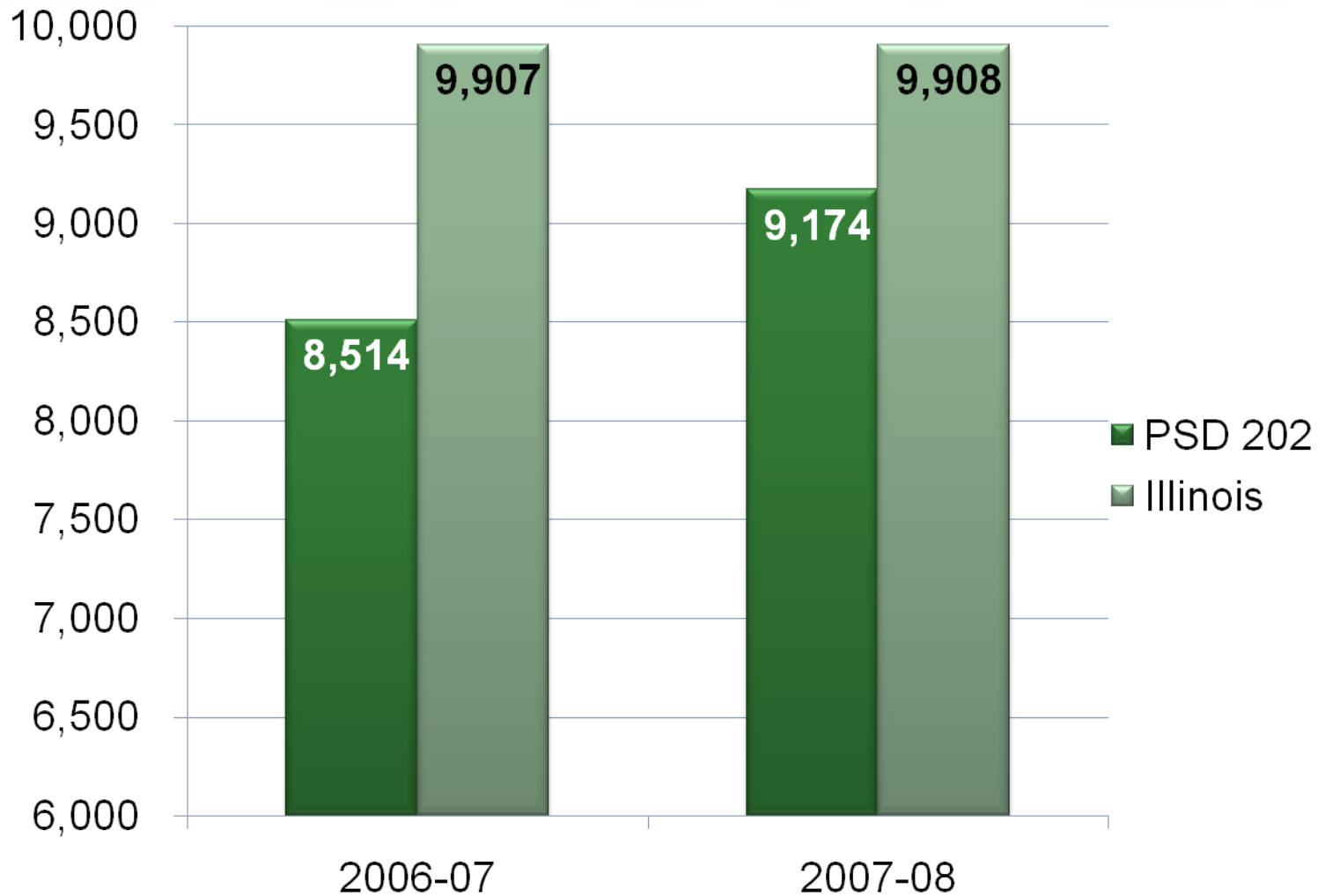
Teacher/Administrator Salaries



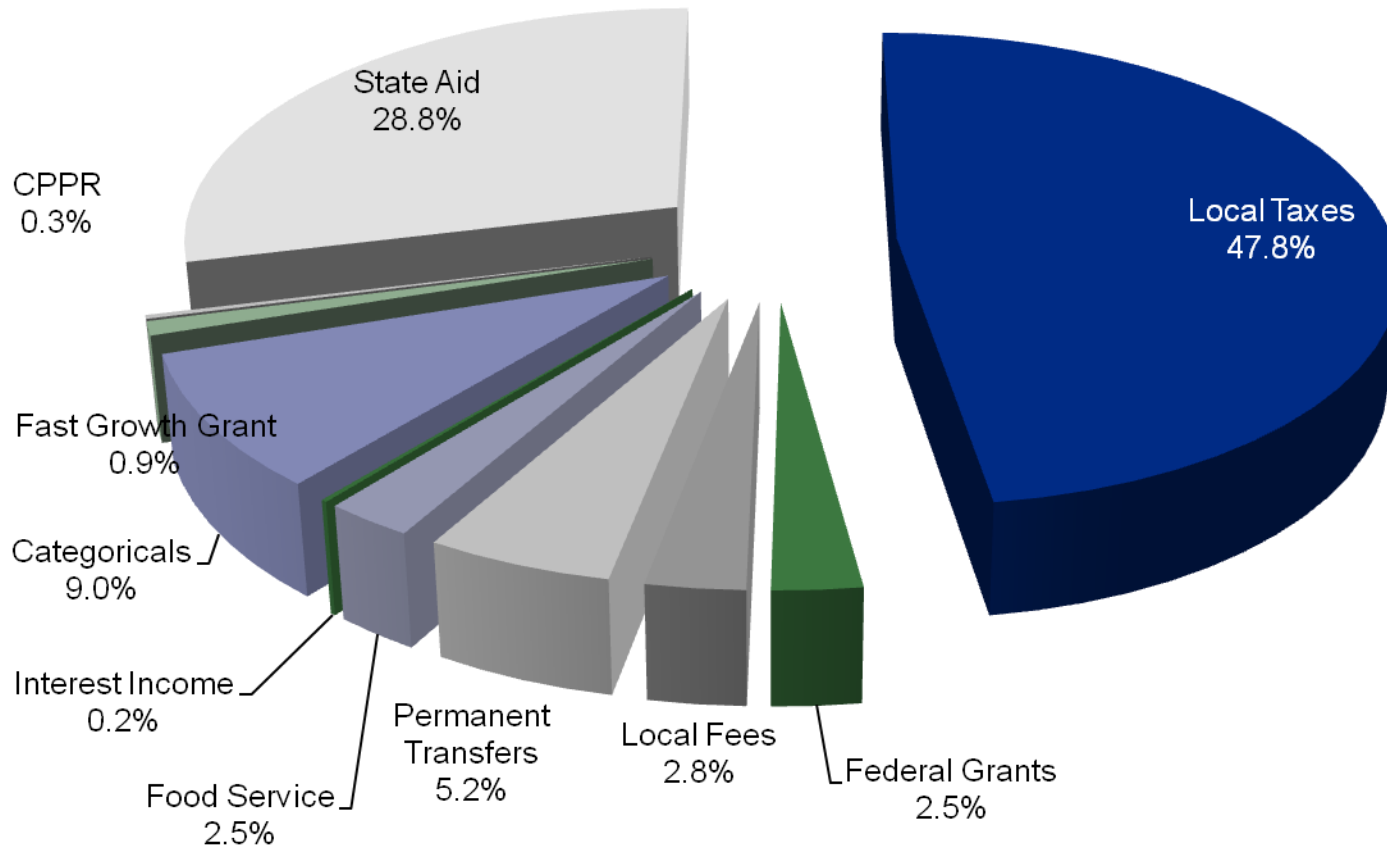
Expenditure by Function 2006-07



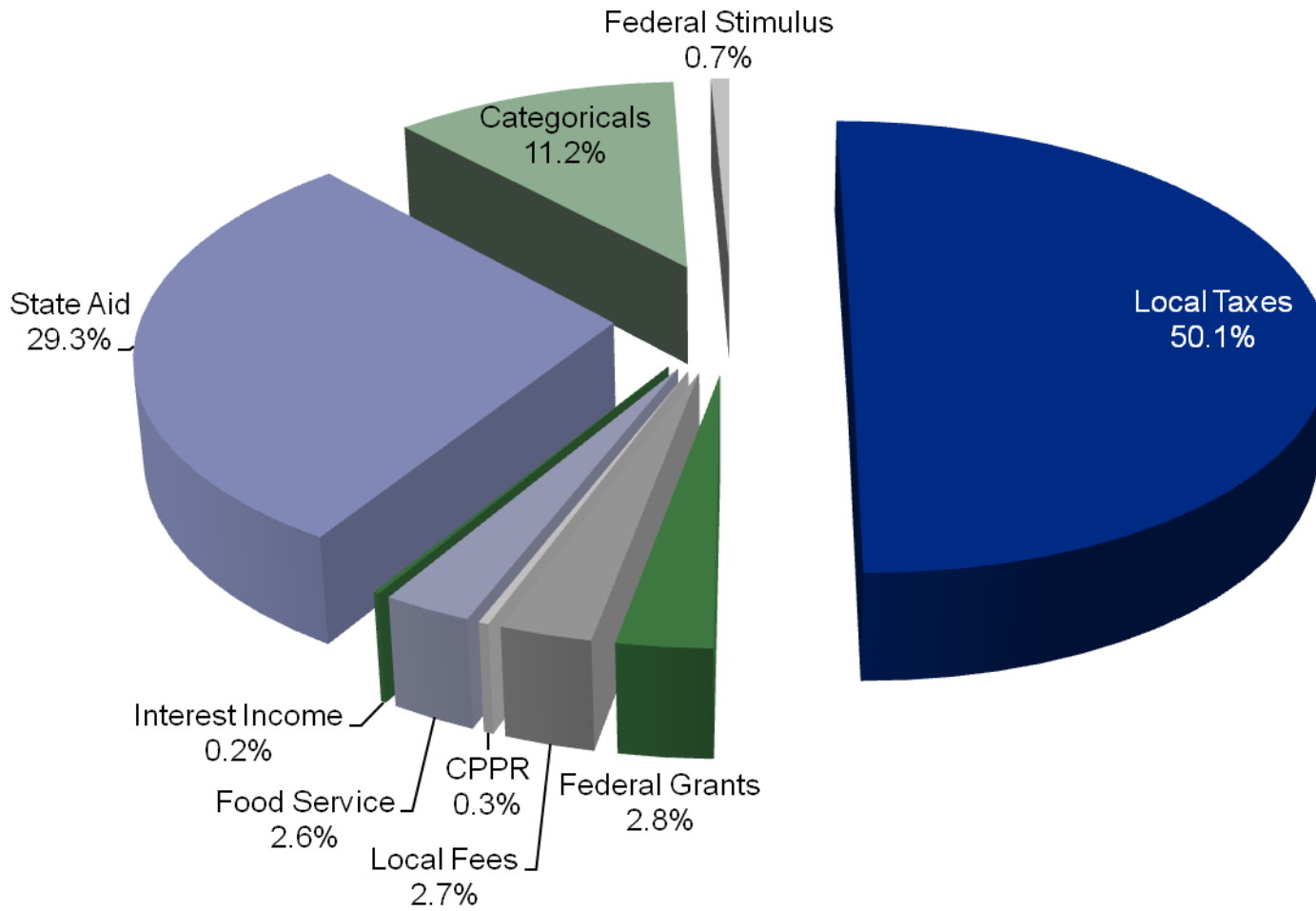
Expenditures per Student



2008-09 Operating Fund Revenue



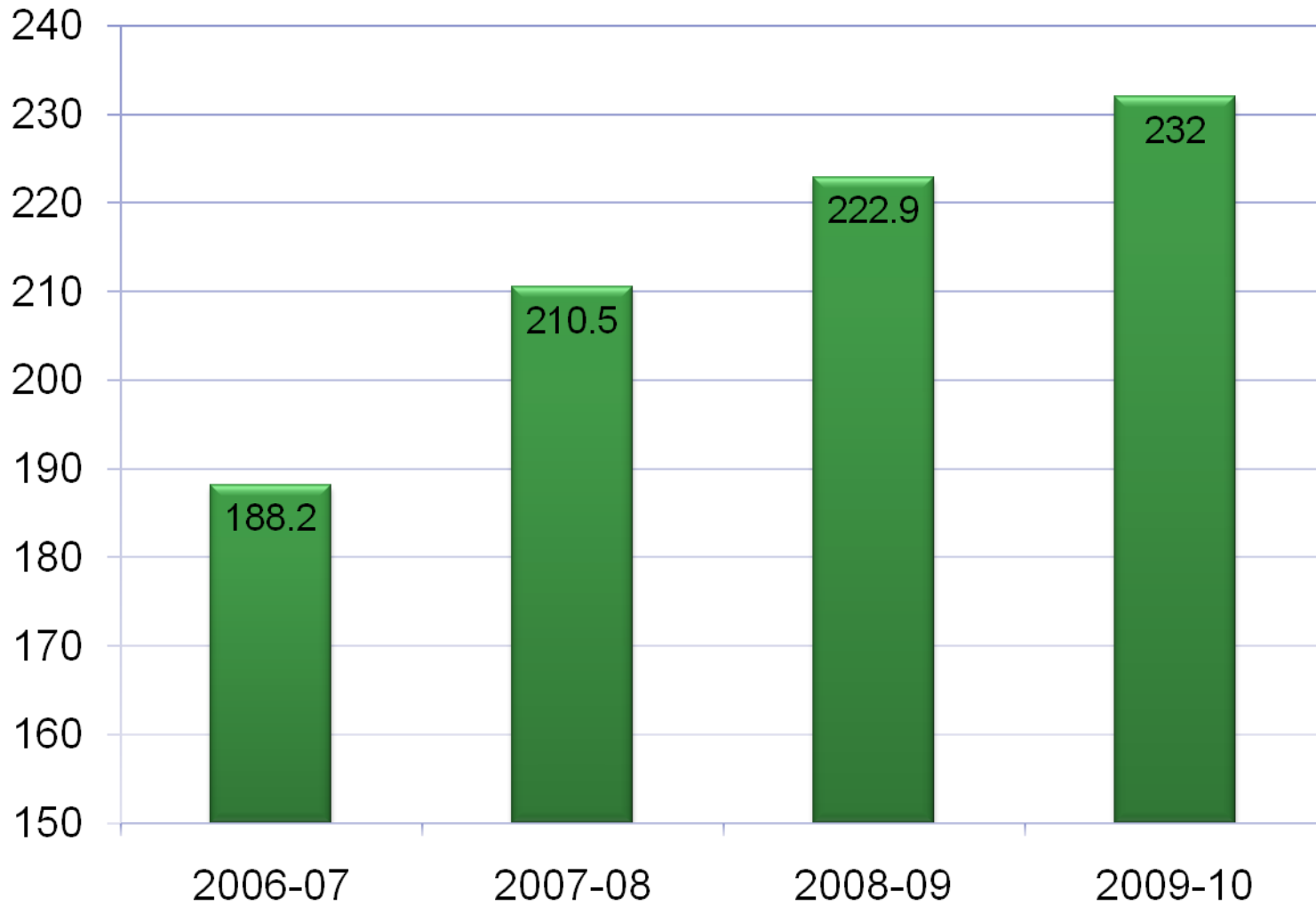
2009-10 Revenue



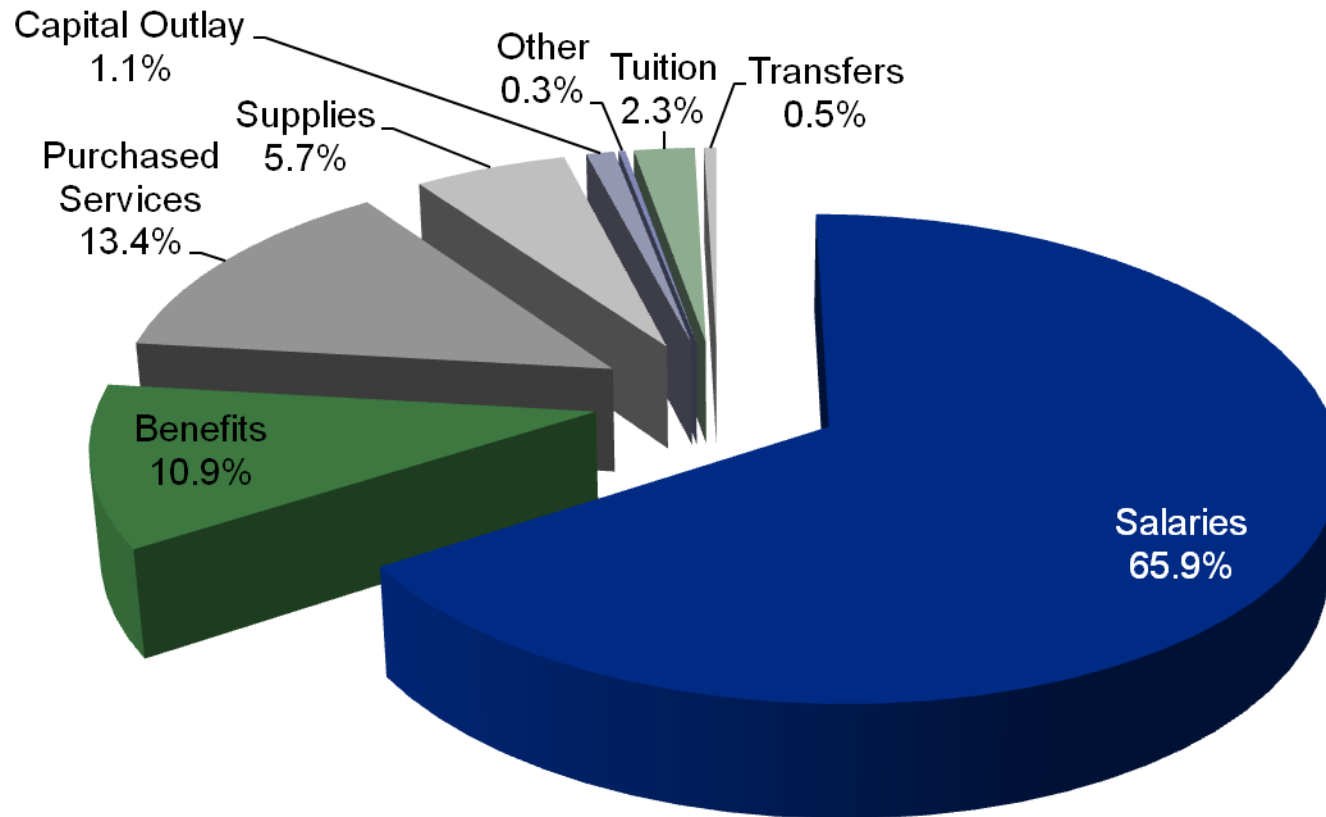
Operating Fund Revenue Sources

	2008-09	2009-10
GSA	\$67,710,000	\$68,000,000
P.T.	\$112,444,232	\$116,318,600
Categorical	\$21,190,205	\$26,017,000
Fed.Stimulus	\$0	\$1,699,495
Fast Growth	\$2,185,156	\$0
Riverboat	\$487,000	\$0
Food Services	\$5,861,858	\$6,109,500
Interest Earnings	\$413,036	\$430,000
Permanent Transfers	\$12,300,000	\$0
Student Fees	\$6,480,902	\$6,222,270
Other	\$6,135,712	\$7,226,400
Total	\$235,208,101	\$232,023,265

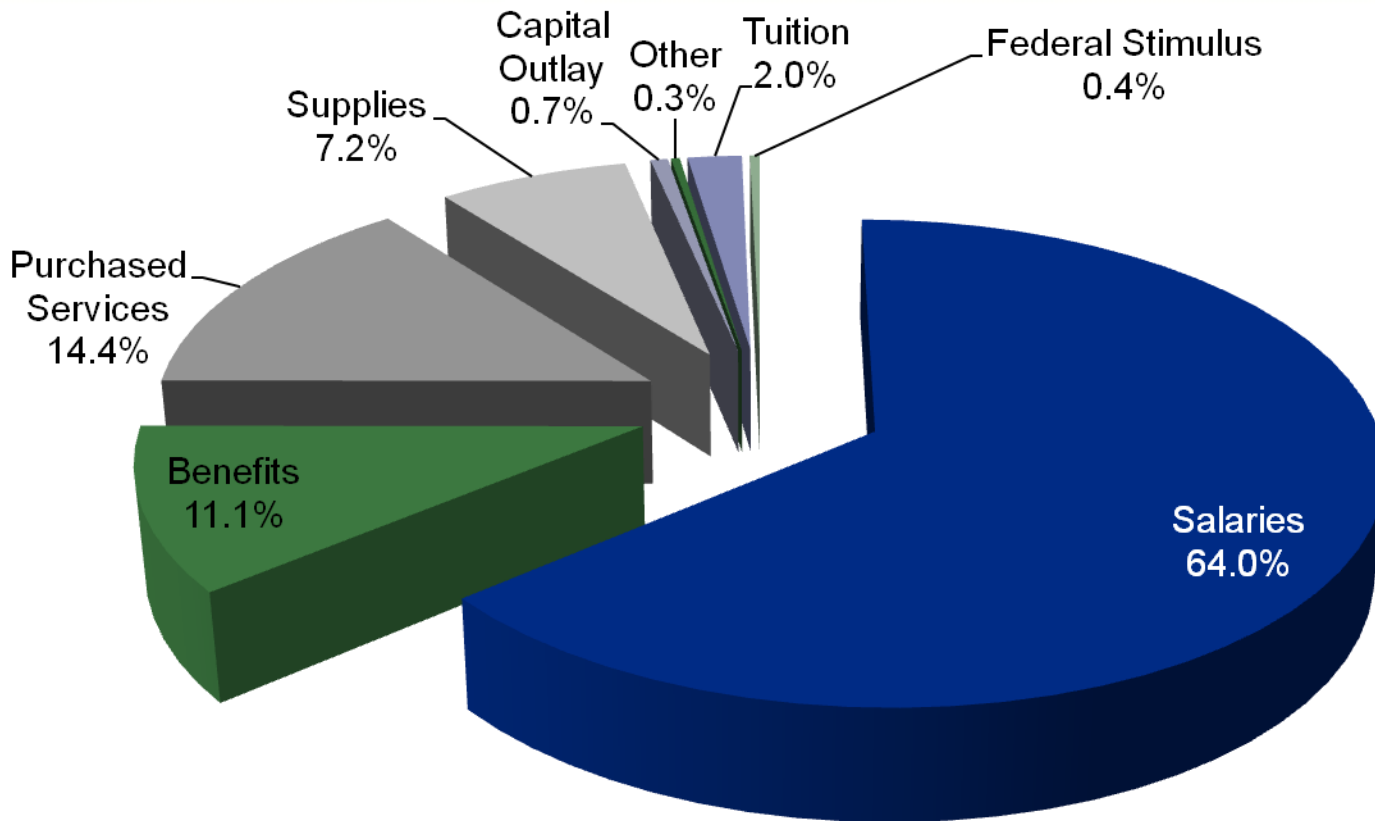
Operating Fund Revenue(without transfers)



2008-09 Operating Fund Expenses



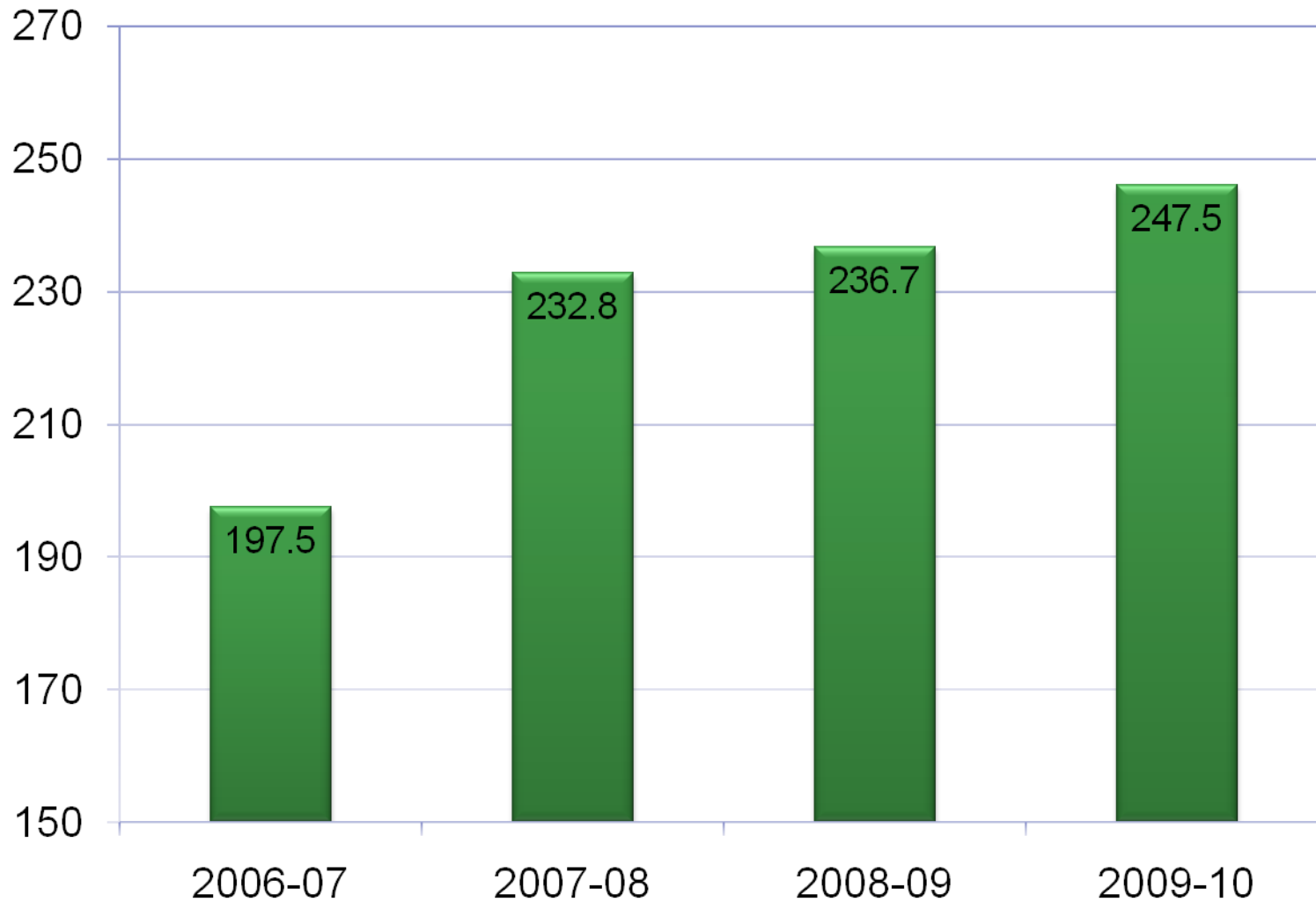
2009-10 Operating Fund Expenses



Operating Fund - Major Expenses

	2008-09	2009-10
Salary	\$155,998,049	\$157,388,673
Benefits	\$25,896,347	\$27,210,378
Purchased Services	\$31,621,549	\$35,460,877
Supplies	\$13,650,532	\$17,609,194
Capital	\$2,435,843	\$1,539,726
Other	\$611,010	\$795,110
Tuition	\$5,430,493	\$5,070,000
Transfers	\$1,062,310	\$1,600,000
Federal Stimulus	\$0	\$907,095
Total	\$236,706,133	\$247,581,053

Operating Fund Expenditures



“The Bottom Line”

- **Protecting our Investment in Classrooms, despite ongoing growth, dwindling revenue**
 - Maintained focus on education resources in 2009-10
 - Reduced deficit spending by \$5.0 Million for 2009-10
- **Revenue Problem not a Spending Problem**
 - Expenses Will Continue to Increase –
 - 600? New Students in 2009-10 or \$5.5 million lag in revenue
 - Staffing & Benefits costs increase by average of 3.8% or \$6.9Million
 - Historical data shows district has under spent state average
- **Short Term Budget Goal-Controlling What We Can**
- **Long Term Budget Goal- Eliminating the Operational Deficit**