



Plainfield Community Consolidated School District 202

[www.psd202.org](http://www.psd202.org)

# Learning Goals

## Grades

9<sup>th</sup> thru 12<sup>th</sup>



**We prepare learners for the future**

### **Our Mission**

The mission of Plainfield Community Consolidated School District No. 202 — the primary source of comprehensive, high quality education in a trusting, supportive environment — is to develop, at all levels, responsible, successful citizens by providing an education, in cooperation with home and community, which: fosters each individual's value, uniqueness, and importance and promotes lifelong learning in an ever-changing society.

### **Our Goals**

District 202 recognizes the need for a vision that embraces and embodies the desires and aspirations of our learning community. We will encourage and support our students, parents, community, staff, and Board of Education as they dedicate their time, talent, and resources in support and pursuit of these goals.

1. Our Learning Community will be a place where each person can achieve his or her maximum individual potential.
2. Optimal learning cultures, climates, and facilities will be developed and maintained.
3. Communication strategies will create a climate of inclusion, trust, and shared responsibility.
4. Resources will be developed and optimized to fulfill the vision, mission, and goals of the District.

## Graduation Requirements

The choice of a four-year high school course of study has always been an important decision because of specific requirements of post-secondary institutions. Poor academic planning can result in graduation delays. Therefore, students are encouraged to plan their programs carefully.

A minimum of 21.0 credits is required for graduation from District 202 high schools. One-half credit is earned upon successful completion of a subject that meets on a daily basis for one semester. The successful completion of a course that meets on a daily basis for a full year is worth one credit.

In accordance with State Graduation Law (P.A. 94-0676) student will take the following minimum number of courses during high school:

	<i>Required</i>		<i>Credits Recommended for College Prep</i>
English	4	English	4.0
Mathematics	3	Mathematics	3.0/4.0
Science	3	Science	3.0/4.0
Consumer Education	0.5	Social Science	3.0/4.0
Social Science	2	Fine Arts / World Language	2.0/4.0 (Foreign Lang)
Physical Edu	4		
Art/World Lang/Music/CTE	1		
Electives	3.5		
<b>Total Credits</b>	<b>21</b>		

Some State Colleges/Universities allow coursework in Art, Music, or Career and Technical Education (Business, Family and Consumer Sciences, Industrial Technology, WILCO). Students should check the requirement for the college(s) they plan to attend.

## Course Load

All freshman and sophomore students must register for a minimum of 6.0 credits each year. Students at the junior and senior level must register for a minimum of 5.0 credits.

## Credits

- All credits will be awarded on a semester basis.
- Only TWO EXTERNAL CREDITS may be applied toward graduation requirements; this does not apply to students not registered as full-time high school students.

External credits are designed for students who need credits for graduation or are seeking to enhance their present course of studies. Only elective course work may be taken by external credit options. Exceptions may be made if a student has failed a required course. The maximum number of external credits allowed is two, unless the building principal grants an exception. Courses are approved by application only. Interested students should see their counselors for an external credit form.

## Course Offerings by Department

### *Career & Technical Education*

#### Business Department

- Accounting (10-12)
- Advanced Accounting (11-12)
- Business Law/Management (1 sem – 11-12)
- Computer Applications (1 sem – 9-12)
- Desktop Publishing for Mktg & Adv (1 sem – 9-12)
- Entrepreneurship (1 sem- 11-12)
- Game Design (1 sem – 9-12)
- Intro to Computer Technology (1 sem – 9-12)
- Orientation to Bus & Personal Finance (1 sem – 9-12)
- Sports & Entertainment Mktg & Adv (1 sem–9-12)
- Work Internship (WI) (12)



#### Family & Consumer Science

- Child Development (1 sem – 9-12)
- Teaching the Pre-school Child (1 sem 10-12)
- Elementary Teaching Internship (1 sem – 11-12)
- Fashion 1 (1 sem – 9-12)
- Fashion 2 (1 sem – 9-12)
- Culinary Arts 1 (1 sem – 9-12)
- Culinary Arts 2 (1 sem – 9-12)
- Culinary Arts 3 (1 sem – 10-12)
- Parenting (1 sem – 9-12)

#### Industrial Technology Department

- Architectural CAD 1 (1 sem – 9-12)
- Architectural CAD 2 (10-12)
- 3D CAD/Solid Modeling (1 sem- 9-12)
- Engineering CAD (1 sem - 10-12)
- CAD Studio (1 sem - 10-12)
- Technical CAD (1 sem - 9-12)

## **English Department**

- Creative Writing (10-12)
- English I (9)
- English I Honors (9)
- English II (10)
- English II Honors (10)
- English III (11)
- English IV (12)
- AP English Language & Composition (11-12)

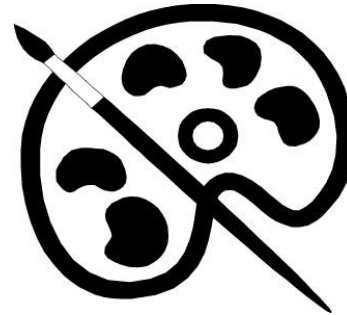
## **ESL Department**

- ESL 1 (9-12)
- ESL 2 (9-12)
- ESL 3 (9-12)
- ESL Bridge (9-12)

## **Fine Arts**

- Art Foundations (9-12)
- Advanced Drawing (10-12)
- Art History (9-12)
- AP Art History (10-12)
- Ceramics 1 (1 sem. – 9-12)
- Ceramics 2 (1 sem. – 9-12)
- Advanced 3D (1 sem – 11-12)
- Commercial Design (11-12)

- AP English Literature & Composition (12)
- Journalism 1: Advanced Writing (10-12)
- Journalism 2 (11-12)
- Rhetoric 1 (1 sem. - 12)
- Rhetoric 2 (2 sem - 12)
- Reading 1 (9-12)
- Reading 2 (10-12)



- Digital Illustration and Design (10-12)
- Digital Illustration and Design 2 (11-12)
- Painting (11-12)
- Sculpture 1 (1 sem - 9-12)
- Sculpture 2 (1 sem - 9-12)
- AP Studio Art (12)
- Digital Photography & Imaging 1 (10- 12)
- Digital Photography & Imaging 2 (11-12)

## **Music Department**

- Concert Band (9-12)
- Symphonic Band (9-12)
- Wind Ensemble (9-12)
- Mixed Choir (9-12)
- Treble Choir (10-12)
- Concert Choir (10-12)
- Exploration of American Music (1 sem – 9-12)
- Music Survey (1 sem - 9-12)
- Music Theory (sem 1 - 9-12)
- Commercial Music Production (1 sem - 10-12)
- AP Music Theory (10-12)



## **World Language Department**

- American Sign Language 1 (ASL) (9-12)
- American Sign Language 2 (ASL) (10-12)
- American Sign Language 3 (ASL) (11-12)
- American Sign Language 4 (ASL) (12)
- French 1 (9-12)
- French 2 (9-12)
- French 2 Honors (9-12)
- French 3 (10-12)
- French 3 Honors (10-12)
- French 4 (11-12)
- AP French Language & Culture (11-12)
- German 1 (9-12)
- German 2 (9-12)
- German 2 Honors (9-12)
- German 3 (10-12)
- German 3 Honors (10-12)
- German 4 (11, 12)
- AP German Language & Culture (11-12)
- Spanish 1 (9-12)
- Spanish 2 (9-12)
- Spanish 2 Honors (9-12)
- Spanish 3 (10-12)
- Spanish 3 Honors (11-12)
- Spanish 4 (11-12)
- AP Spanish Language & Culture (11-12)
- AP Spanish Literature & Culture (11-12)
- Spanish for Heritage Speakers 1 (9-12)
- Spanish for Heritage Speakers 2 (9-12)

## **Mathematics Department**

- Algebra 1 Block (9)
- Algebra 1 (9)
- Algebra 1 Honors (9)
- Algebra 2 (9-12)
- Algebra 2 Honors (9-12)
- AP Calculus AB (11-12)
- AP Calculus BC (11-12)
- AP Computer Science A (11-12)
- AP Computer Science Principles (10-12)
- AP Statistics (11-12)

## **Science Department**

- Anatomy and Physiology Honors (10-12)
- Biology (9)
- Biology Honors (9)
- AP Biology (10-12)
- Chemistry (10-11)
- Chemistry Honors (10)
- AP Chemistry (11-12)
- Environmental Science: Environmental Issues (9-12)

## **Physical Education, Health, & Driver Education**

- Adventure Challenge (1 sem, 11-12)
- Dance 1 (1 sem, 11-12)
- Dance 2 (1 sem, 11-12)
- Driver Education, CPR, First Aid, & Safety (1 sem, 10-12)
- Fall Individual Activities (Term 1, 11-12)
- Fall Team Activities (Term 1, 11-12)
- Health (1 sem, 10-12)
- Wellness (9)
- Strength Performance (1 sem – 11-12)

- Discrete Mathematics (Sem. 2 – 12)
- Intermediate Algebra (Sem. 1 – 12)
- Mathematics for General Education (Sem 2 – 12)
- Geometry (9-10)
- Geometry Honors (9-10)
- Computer Programming I (1 sem- 9-12)
- Computer Programming II (1 sem - 9-12)
- Precalculus (10-12)
- Precalculus Honors (10-12)
- Statistics (Sem. 1 – 12)

- Environmental Science: Environmental Res (9-12)
- AP Environmental Science (10-12)
- Forensics (1 sem – 10-12)
- Physical Science (10)
- Physics (10-12)
- Physics Honors (10-12)
- AP Physics 1 (10-12)
- AP Physics 2 (10-12)
- AP Physics C (10-12)

- Leadership Training (11-12)
- Life Skills (1 sem, 11-12)
- Recreational Activities (1 sem, 11-12)
- Skills for Healthy Living (1 sem, 11)
- Sports Medicine(1 sem, 11-12)
- Spring Individual Activities (Term 2, 11-12)
- Spring Team Activities (Term 2, 11-12)
- Intro to Weight Training (1 sem, 11-12)

## **Social Science Department**

- Economics (1 sem – 11-12)
- AP European History (10-12)
- Government & Civics (1 sem - 11, 12)
- History of Civilization I (Term 1, 11-12)
- History of Civilization II (Term 2, 11-12)
- AP Human Geography (9-12)
- AP Government & Politics: US (1 sem -11-12)
- AP Microeconomics (1 sem – 11-12)
- Psychology (1 sem – 11-12)
- AP Psychology (11-12)
- General Psychology (1 sem – 11-12)
- Sociology (1 sem - 11, 12)
- Street Law (1 sem – 11-12)
- US History (10-11)
- AP US History (10-11)
- AP World History (10-12)
- World Cultures & Geography (9-12)
- AP World History (9-12)
- World History (9-12)

## **Wilco**

- ACE: Architecture, Construction Mgmt, & Engineering (12)
- AIM: Advanced Integrated Manufacturing (12)
- Auto Services (Mechanics) I (11-12)
- Auto Services (Mechanics) II (12)
- Auto Services (Mechanics) I/Early Bird (11-12)
- Barbering (11-12)
- Certified Nursing Assistant (12)
- Computer Technology I (11-12)
- Construction, Landscape, & Sports Turf Mgmt (11-12)
- Cosmetology I (11-12)
- Cosmetology II (12)
- Criminal Justice (11-12)
- Culinary Arts I (11-12)
- Culinary Arts II: Hospitality Careers & Event Planning (12)
- Early Childhood Education I (11-12)
- Early Childhood Education II (11-12)
- Emergency Medical Services (12)
- Fire Science (11-12)
- Game Design (12)
- Heavy Equipment Technology (12)
- Introduction to Health Professions (11-12)
- Nail Technology (11-12)
- Veterinary Assistant (11-12)
- Welding and Fabrication I (11-12)
- Welding and Fabrication II (12)
- Welding and Fabrication I / Early Bird (11-12)

## Special Education Department

- Critical Skills (9-12)
- Guided Study (9-12)
- General Math1 (9)
- General Math 2 (9-10)
- Algebra 1A (9-11)
- Algebra 1B (10-12)
- Geometry (10-12)
- Practical Math (11-12)
- English A Block (9-12)
- English C Block (9-12)
- Transitional English 2 (11)
- Transitional English 4 (12)
- English I (9)
- English II (10)
- English III (11)
- English IV (12)
- Social Communication (9-10)
- Biology (9-10)
- Chemistry (10-12)
- Physical Science (10-11)
- U S History (10-11)
- Government & Civics (11-12)
- Economics (11-12)
- Social Skills for Life (9-12)
- Physical Education (9-12)
- Vocational Education 1 (9-12)
- Vocational Education 2 (10-12)
- Vocational Education 3 (11-12)
- Vocational Co-Op Class (11-12)
- Vocational Co-Op Work (11-12)
- The SCORE Program (9-12)
- STAR PLUS Program (9-12+)
- P-STEP Program (12+, ages 18-21)

## Non-Departmental Courses

- Test Preparation

