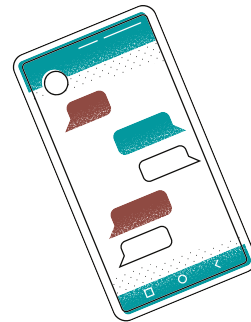
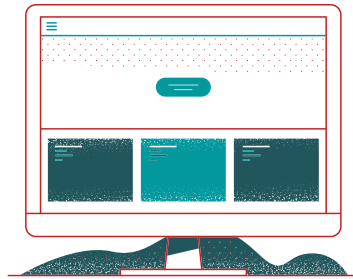




# PLAINFIELD 202- HARTGROVE COUNSELING CENTER

WE HAVE GONE VIRTUAL!



## WHAT'S NEW

---

Now Accepting  
New Patients via  
TeleAssessment

FOR MORE INFORMATION  
OR TO SCHEDULE AN  
APPOINTMENT, PLEASE  
CONTACT US:

CALL: 779-252-4090

TEXT: 312-835-5475

EMAIL: [HARTGROVE@PSD202.ORG](mailto:HARTGROVE@PSD202.ORG)

Quality behavioral health services are now available to all students and families via telehealth.

## SERVICES INCLUDE:

---



**INDIVIDUAL  
COUNSELING**



**GROUP COUNSELING**



**FAMILY COUNSELING**



**PSYCHIATRIC EVALUATION  
& MEDICATION MANAGEMENT**