



# Plainfield School District 202



# Enhancing LOCKDOWN



# What Does A.L.I.C.E Stand For?

- A= Alert: Tell people what is going on.
- L= Lockdown: Good starting point.
- I= Information: Provide as much information as possible in real time.
- C= Counter: You can survive contact with an armed intruder!!
- E= Evacuate: If the threat is inside, get outside.

# A Comprehensive Program

*“Enhance ... Not Change!”*

Turn A.L. into A.L.  .C.E.

***Alert***

***Lockdown***

*** nform***

***Counter, and/or***

***Evacuate***

## **IF YOU SEE SOMEONE OUT OF PLACE...**

All adults will have an ID badge or a visitor's sticker.

If you see someone in school & you are unsure they should be here,

***Tell any adult.***

The adult will talk to the person and/or contact the office to investigate if the person should be here.

# Remember...

**If a staff member asks you what your name is, you need to tell them.**

**All adults in this building are responsible for keeping the building safe, and we need your help to do this.**

## When there is an immediate threat

1. Remain calm.
2. Listen to staff and act quickly when directed.
3. Stay off of your cell phone. This can jam communications for emergency personnel.
4. Listen/Look for information. Assess the information.
5. If at all possible, evacuate to a safe zone.

# Lockdown

- Great starting point
- You may need more options to survive.



# LOCKDOWN Procedures

- LOCKDOWN is only used when there is immediate danger in the building
- Always treat a LOCKDOWN drill as if it was the real thing.
  - That is our only chance to PRACTICE so we are prepared for anything. Always take it seriously.
- During any LOCKDOWN, stay off of your electronic devices. This can interrupt communication with the emergency response teams.
- If you are in a hallway or bathroom, HIDE or EVACUATE. Do not walk around the halls.





Which is a more effective barricade for a door opening out?

**Barricading**

# INFORM

- Continuation of the ALERT
- Provide Real-Time Information
- Allows for Good Decision-Making
  - (Lockdown vs. Evacuation)
- Call 911 with the information.
- **LISTEN TO THE ADULT – They will guide you along the way!!**

# Counter

You can survive contact with  
an armed intruder!!

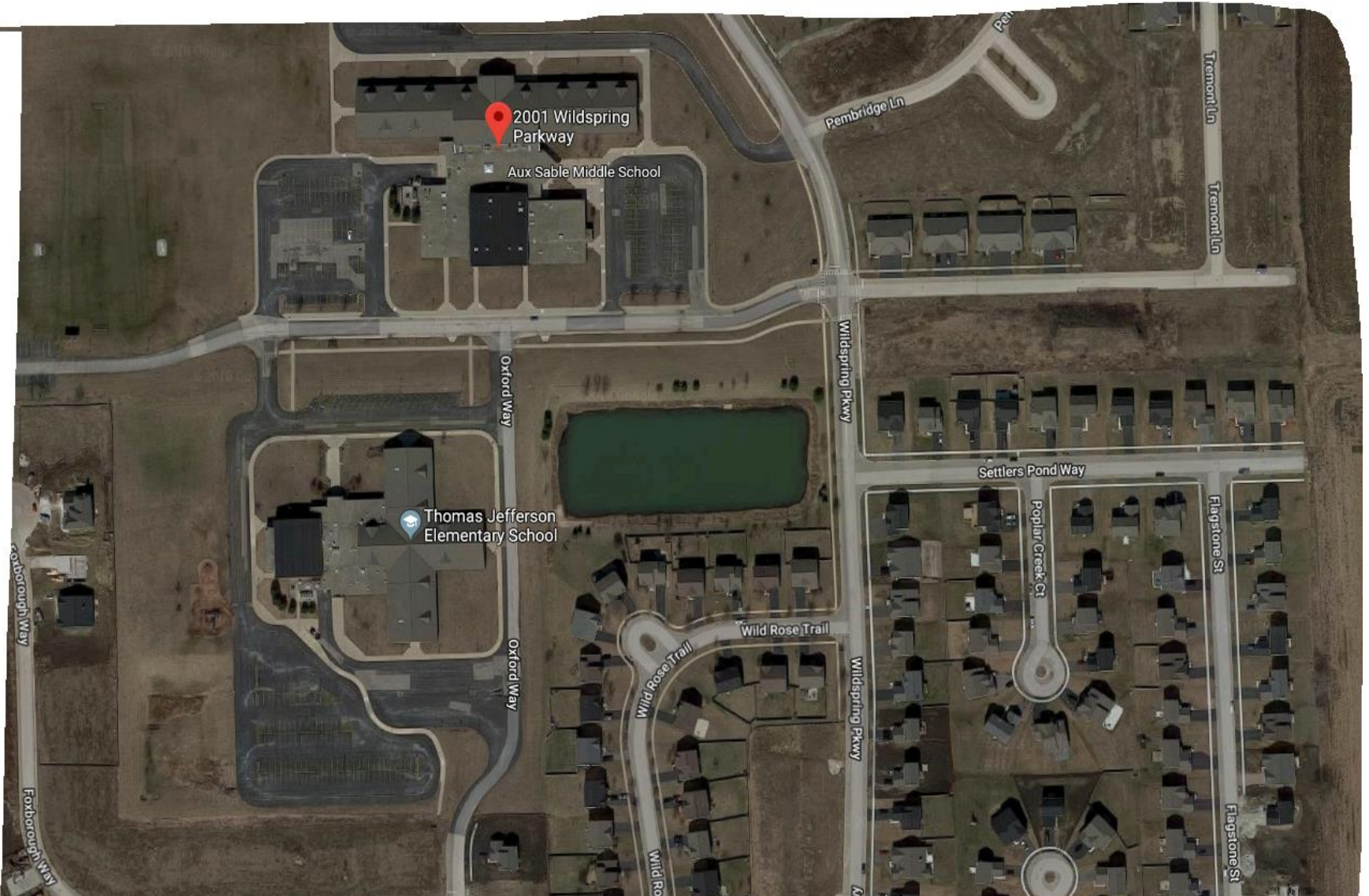
- ☐ In a classroom lockdown, barricade and be ready to attack the intruder, IF, they invade your safe area
- ☐ The “bad guy” is not usually a highly skilled shooter. Be ready to throw objects at the intruder, if they gain access in your area.
- ☐ Engage in acts that will require very high skill level:
  - Noise
  - Movement
  - Distance
  - Distractions

# EVACUATION Procedures

- If the fire alarm sounds or if we have to evacuate the building, exit the building with your class.
- Stay with your teacher. They are accountable for you, so stay with them.
- Exit the building quickly and quietly. Always know at least two alternative exits to any place you are in the building.  
What if one of your exits is blocked?
- If you are not with your class, report to any adult.

Have a Plan – (This slide will be specific to each Middle School  
This is an example of Aux Sable Middle School )

Discuss options - if evacuation is the best option know your surroundings



# NEVER OPEN DOORS FOR ANYONE

During the school day...

ALL visitors & late students enter at Door #1 (main entrance).

**Never open any doors for  
any students or adults!**

# Keep Calm and Look at your Options

1. Barricade



2. Evacuate

