



# Enhancing LOCKDOWN



## Plainfield School District 202



# Lockdown

- Great starting point
- You may need more options to survive.



# Enhanced Lockdown Practices (Using A.L.I.C.E. principles)

**A**= Alert: Tell people what is going on.

**L**= Lockdown: Good starting point.

**I**= Information: Provide as much information as possible in real time.

**C**= Counter: As a last resort!! Do what you need to do to survive

**E**= Evacuate: If the threat is inside, get outside.

***Common Sense approach to things***

- Started by **Response Options:**
- *Studied school shootings.*
  
- **Led to questioning of Educators**
  - One-size fits all strategy - LOCKDOWN
  - They were doing all they KNEW!!
  - Inadequate Preparation and Conditioning

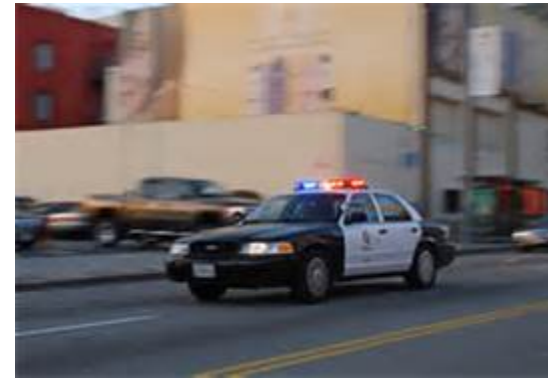
*This program has one primary focus: **SURVIVAL**  
of those who find themselves under attack.*

# Response Time

- 25 years of Mass Shooting events have yielded a national average for the response time of Law Enforcement to an Active Killer scene.
- How long:

**5-6**

**Minutes**



## ➤ *Who is the real First Responder?*



We are going to empower the students  
and staff to take action to

**INCREASE SURVIVABILITY**

## Plainfield School District 202

# LOCKDOWN Procedures

- LOCKDOWN is only used when there is immediate danger in the building.
- Lock and barricade the door.
- Always treat a LOCKDOWN drill as if it was the real thing.
  - That is our only chance to PRACTICE so we are prepared for anything. Always take it seriously.
- During any LOCKDOWN, stay off of your electronic devices. This can interrupt communication with the emergency response teams, unless you are calling 911 with information.
- If you are in a hallway or bathroom EVACUATE to a safe zone. Do not walk around the halls.



It is important to have an all-  
day in your classroom or school for  
children to learn from their parents and  
teachers. Please contact us if you have  
any questions or concerns.

Penelope

Kendall

Brooke

Brooklyn

Natalia





**BARRICADING**

# INFORM

- Continuation of the ALERT
- Provide Real-Time Information
- Allows for Good Decision-Making
  - (Lockdown vs. Evacuation)
- Call 911 with the information.
- **The elementary students first understanding is to:  
“LISTEN TO THE ADULT – They will guide you along  
the way!!”**

# Counter

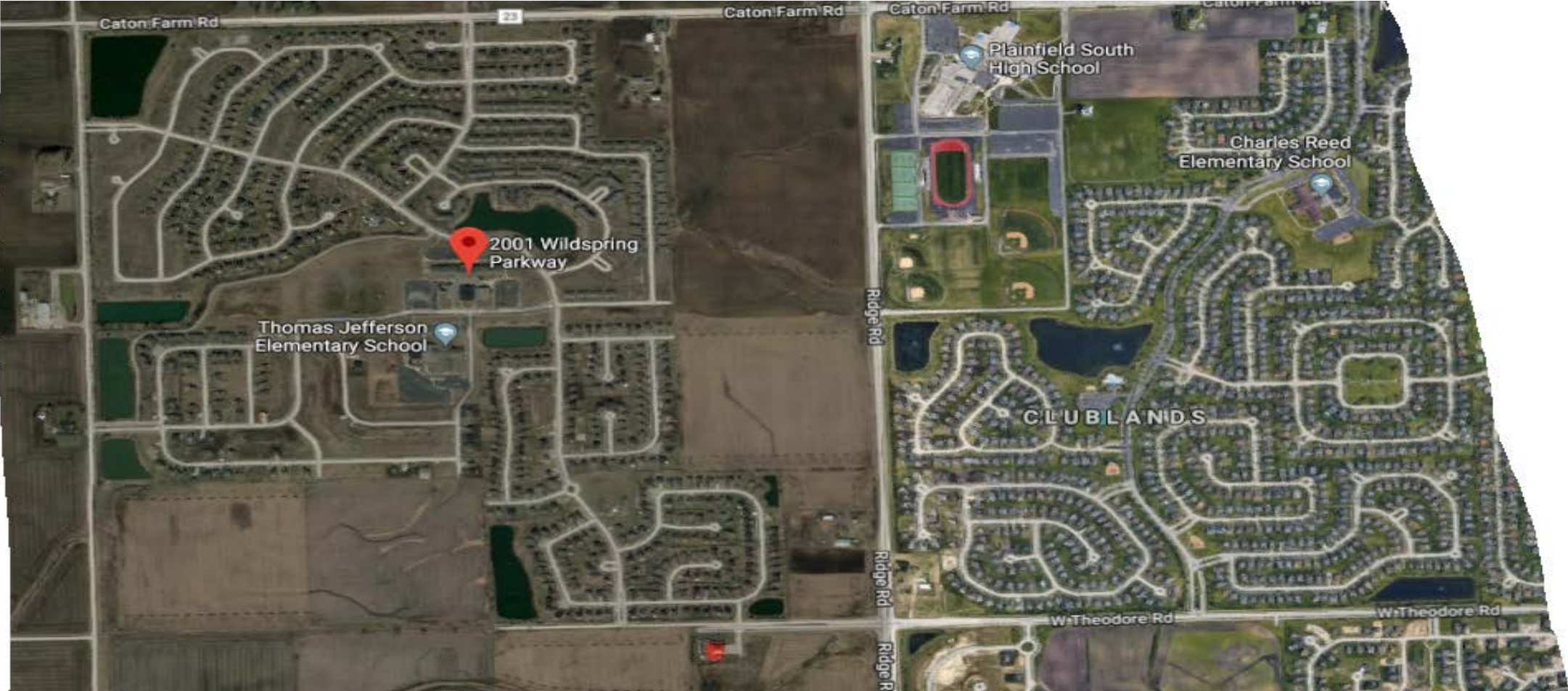
You can survive contact with  
an armed intruder!!

- ▣ In a classroom lockdown, barricade and be ready to attack the intruder, IF, they invade your safe area
- ▣ The “bad guy” is not usually a highly skilled shooter. Be ready to throw objects at the intruder, if they gain access in your area.
- ▣ Engage in acts that will require very high skill level:
  - Noise
  - Movement
  - Distance
  - Distractions

# EVACUATION Procedures

- A Lockdown alarm takes precedence over the fire alarm. Unless you see fire or smell smoke, follow lockdown procedures. Listen to the guidance from your teacher.
- Students need to stay with their teacher.
- Exit the building quickly and quietly. Always know at least two alternative exits to any place you are in the building.
- Students need to understand, if they are not with your class, report to any adult or evacuate. (Ex. bathroom or hallway)

# HAVE A PLAN – for your building







Plainfield School District 202

**STUDENTS NEED TO UNDERSTAND  
THEY SHOULD NEVER OPEN DOORS FOR ANYONE**

During the school day...

ALL visitors & late students enter at Door #1 (main entrance).

**Never open any doors for  
any students or adults!**



# Keep Calm and Look at your Options

1. Barricade



2. Evacuate



3. Distract to Survive

