

2021-2022 School Year



PLAINFIELD COMMUNITY CONSOLIDATED
SCHOOL DISTRICT 202

We prepare learners for the future.

Sources

- Centers for Disease Control and Prevention (CDC) July 9, 2021 Update: <https://www.cdc.gov/coronavirus/2019-ncov/community/schools-childcare/k-12-guidance.html>
- Illinois State Board of Education (ISBE) July 9, 2021 Update: <https://www.isbe.net/Pages/covid19.aspx>
- Illinois Department of Public Health (IDPH) July 9, 2021 Press Release: <http://www.dph.illinois.gov/news/illinois-department-public-health-adopts-cdc-covid-19-prevention-school-guidance>



**Illinois
State Board of
Education**



Agenda For Presentation



- Review current guidance from CDC, IDPH, and ISBE
 - Prevention Strategies
 - Masks
 - Transportation
 - Food Service
 - Remote Learning
 - Contact Tracing
 - Screening Testing
- Review Options Considered
- District Recommendation

Summary of Key CDC Recommendations

- Prevention and mitigation strategies are still important
- In-Person Instruction = Top priority
- CDC recommends schools
 - maintain at least 3 feet of physical distance between students within classrooms combined with
 - indoor mask wearing is recommended for people who are not fully vaccinated, to reduce transmission risk.
 - Layer strategies if not possible to maintain 3 feet physical distance
- More social distancing (3 feet+) = less need for universal masking
- Less distance (<3 feet) = more prevention strategies including indoor masking
- District should monitor data to guide decision making on the level of prevention strategies needed

To get kids back in-person safely, schools should monitor



Community Transmission **Vaccination Coverage** **Testing** **Outbreaks**

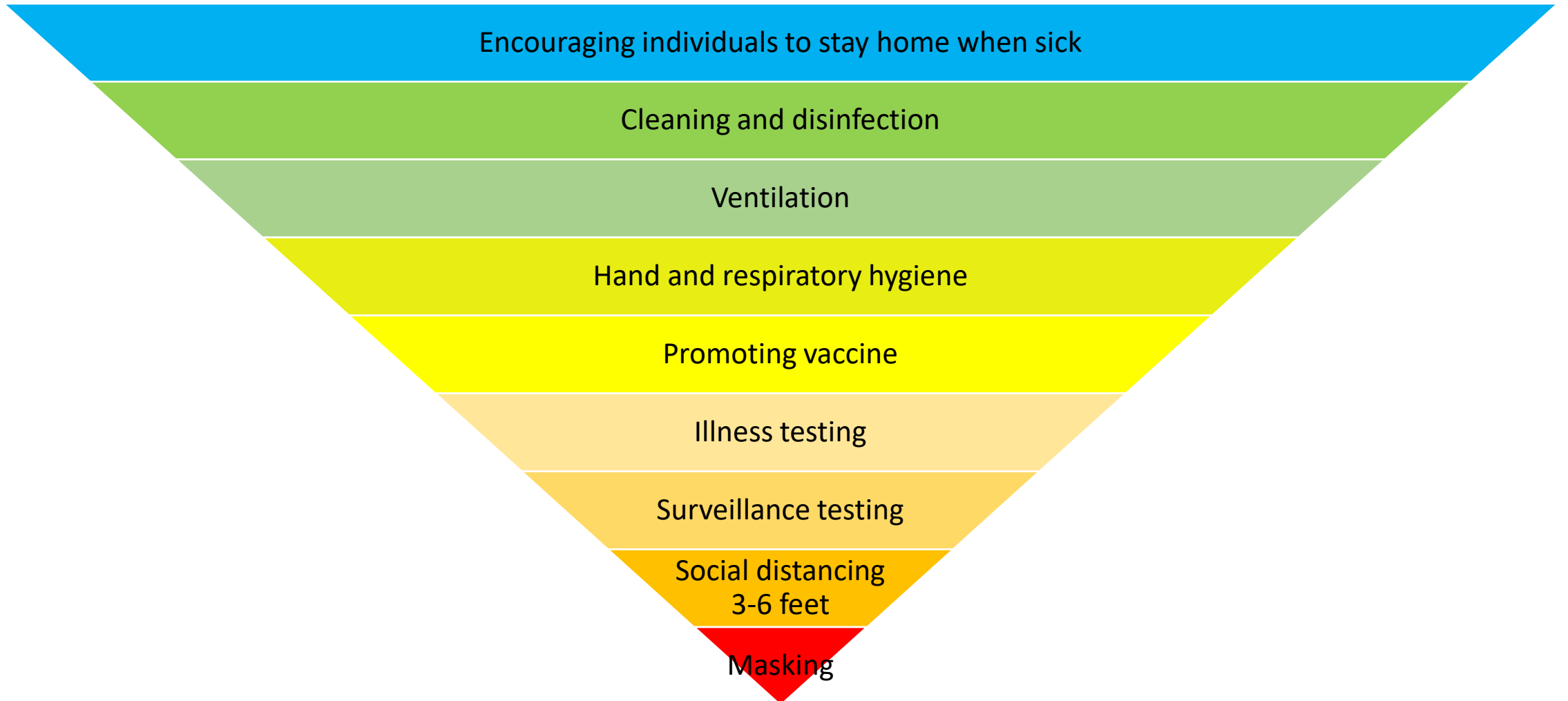
to help prevent the spread of COVID-19



cdc.gov/coronavirus

CS22431A 07/06/2021

Prevention Strategies Hierarchy



Masks

General Recommendation from CDC

- Non-vaccinated – should wear masks while indoors, can be removed outside
- Vaccinated - no mask required inside or outside
- Universal Masking is NOT required. It is recommended if
 - Population under 12
 - Higher or increased risk of COVID
 - Low community vaccine rate
 - Transmission of new variant



Transportation

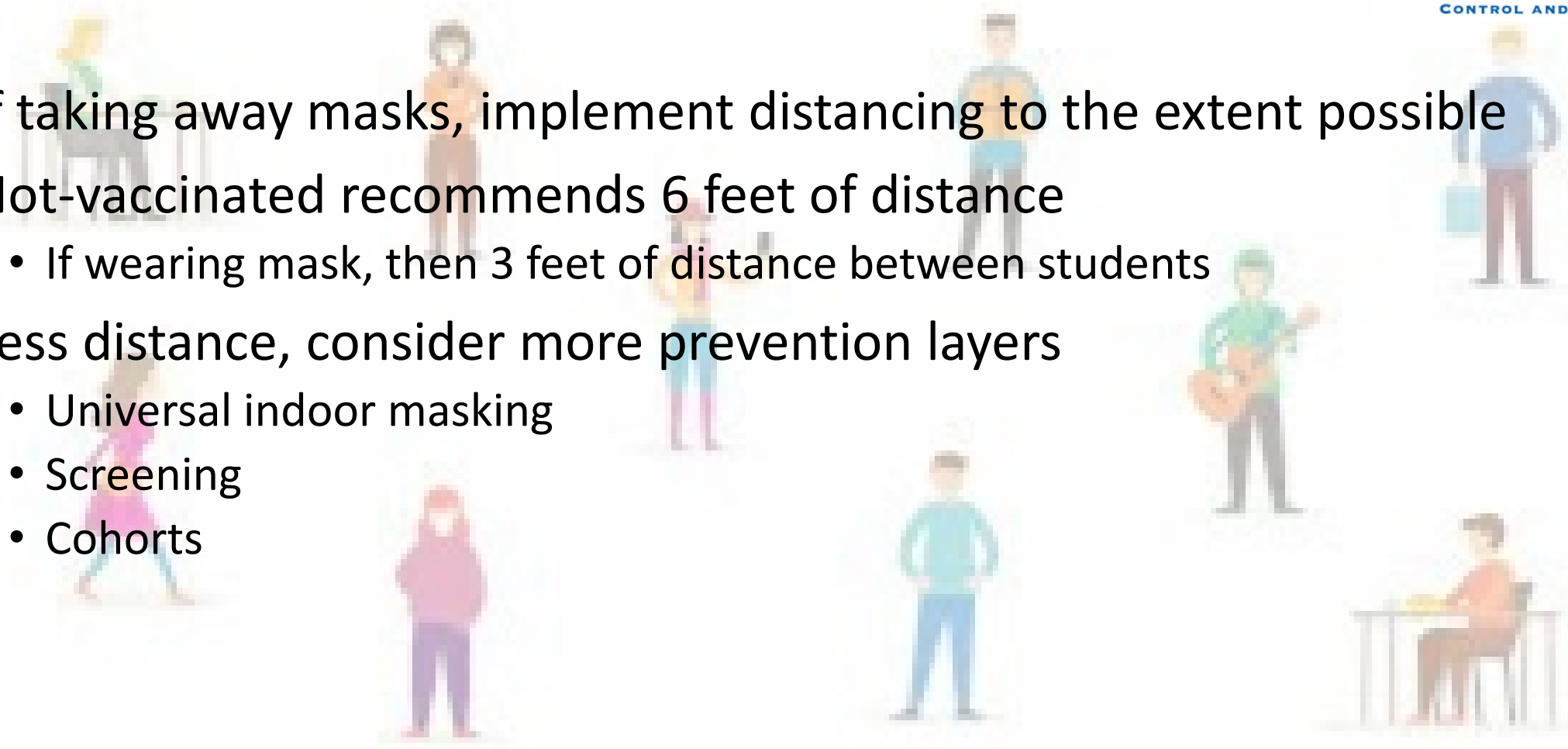


CDC Mandate

- All passengers and drivers **MUST** wear a mask while on school bus or other school provided transportation
- Applies regardless of mask wearing policy in the school building
- Buses should open or crack windows, if this does not pose a safety risk

Physical Distancing

- If taking away masks, implement distancing to the extent possible
- Not-vaccinated recommends 6 feet of distance
 - If wearing mask, then 3 feet of distance between students
- Less distance, consider more prevention layers
 - Universal indoor masking
 - Screening
 - Cohorts



Screening and Testing



- Symptom screening and surveillance testing can be used to ID and isolate cases quickly, reduce transmission in schools
- Mask optional districts should consider screening testing
- Non-Vaccinated individuals are recommended to have regular screening testing when in moderate to high transmission
- Vaccinated individuals are not recommended for regular screening testing



Screening Testing Recommendations by Level of Community Transmission



	Low Transmission ¹ Blue	Moderate Transmission Yellow	Substantial Transmission Orange	High Transmission Red
Students	Do not need to screen students.	Offer screening testing for students who are not fully vaccinated at least once per week.		
Teachers and staff	Offer screening testing for teachers and staff who are not fully vaccinated at least once per week.			
High risk sports and activities	Recommend screening testing for high-risk sports ² and extracurricular activities ³ at least once per week for participants who are not fully vaccinated.		Recommend screening testing for high-risk sports and extracurricular activities twice per week for participants who are not fully vaccinated.	Cancel or hold high-risk sports and extracurricular activities virtually to protect in-person learning, unless all participants are fully vaccinated.
Low- and intermediate-risk sports	Do not need to screen students participating in low- and intermediate-risk sports. ²	Recommend screening testing for low- and intermediate-risk sports at least once per week for participants who are not fully vaccinated.		



CONTACT TRACING

- Continued required contact tracing
- Non-vaccinated continue to quarantine if direct exposed
- Vaccinated not required to quarantine if asymptomatic
- Quarantine is at least 10 days for confirmed COVID positive and close contacts for students
- Quarantine individuals who are within 6 feet of an infected person for 15 total minutes over 24-hour period
 - Excludes students within 3-6 feet if:
 - Both students wearing face masks
 - Preventative strategies are implemented

Masks in Athletics and Activities



- Fully vaccinated
 - No longer required to wear masks or maintain physical distance
 - Both indoors and outdoors
 - Don't need to quarantine if directly exposed
- Non-vaccinated
 - Should continue wearing masks indoors and when not actively participating outdoors
- Consider implementing athletics/activities related rules depending on the risk level of the sport/activity
- Consider use of screening testing
- Awaiting further guidance from IHSA





Food Service and School Meals

- Maximize physical distance as much as possible
- Consider using additional spaces for mealtime to facilitate distancing if there is not enough space in the cafeteria
- No longer need to use single use items (i.e. plates, utensils, cups, trays)
- No longer need to pack separate meals/bags
- Vaccinated
 - Do not need to distance when eating
- Non-Vaccinated
 - As much distance as possible when eating, recommended at least 6 feet



Remote Learning Guidance



Illinois State Board of Education

- Beginning with the 2021-22 school year, all schools must resume fully in-person learning for all student attendance days, provided that, pursuant to [105 ILCS 5/10-30](#) and [105 ILCS 5/34-18.66](#).
- Remote instruction be made available for students who
 - have not received a COVID-19 vaccine or
 - are not eligible for a COVID-19 vaccine
 - only while they are under quarantine consistent with guidance or requirements from a local public health department or the Illinois Department of Public Health."



District
Recommendations

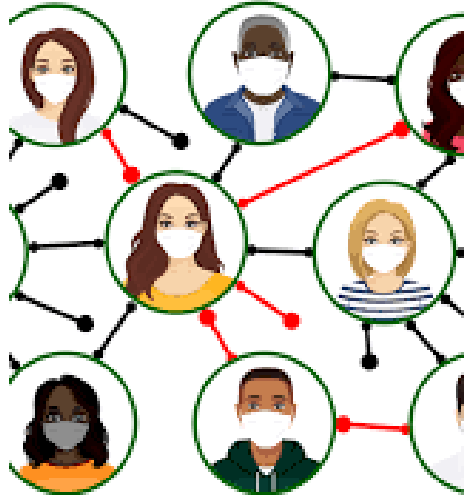
Learning Recommendations

- In-Person learning is prioritized
- Remote learning will be provided for all students when on quarantine
 - Remote Learning does NOT need to be dual platform (synchronous into the live classroom)
- The District is reviewing a policy under [105 ILCS 5/10-29](#) that could allow students to participate in remote learning under limited circumstances.
- Homebound Instruction will be provided to those who meet eligibility



+





SOCIAL
DISTANCING



Preventative Measures in District 202

The district will continue to implement and encourage

- Air quality control
- Handwashing and sanitizing
- Modified hallway pathways
- Social distancing of 3 feet when possible
 - Consider flex seating when possible
 - Consider group seating
- Contact tracing

Vaccination Information

- District encourages individuals who are eligible to get the vaccine. The vaccine is NOT required
- The District may ask parents/guardians for proof of vaccination in specific circumstances (i.e. contact tracing)
- The District may survey parents/guardians to gather information on the percent of students who are vaccinated by school
- Any information about vaccinations will be optional for the parent/guardian to submit



Metrics that will be monitored



The District will monitor the current weekly data and data trends:

- COVID-19 cases within schools
- Vaccine coverage
- Community statistics – Will County Health Department
- County School Metrics – IDPH
- County Transmission Rate – IDPH and CDC
- Monitor new variants

CDC Thresholds

Table 1. CDC Indicators and Thresholds for Community Transmission of COVID-19¹

Indicator	Low Transmission Blue	Moderate Transmission Yellow	Substantial Transmission Orange	High Transmission Red
Total new cases per 100,000 persons in the past 7 days ²	0-9	10-49	50-99	≥100
Percentage of NAATs that are positive during the past 7 days ³	<5.0%	5.0%-7.9%	8.0%-9.9%	≥10.0%

Prevention Strategies by Level of Community Transmission			
Low Transmission ¹ Blue	Moderate Transmission Yellow	Substantial Transmission Orange	High Transmission Red
Elementary Schools Physical distancing: at least 3 feet between students in classrooms		Elementary Schools Physical distancing: at least 3 feet of distance between students in classrooms Cohorting ² recommended when possible	
Middle and High Schools Physical distancing: at least 3 feet between students in classrooms		Middle and High Schools Physical distancing: at least 3 feet of distance between students in classrooms Cohorting recommended when possible	Middle and High Schools Schools that can use cohorting: at least 3 feet of distance Schools that cannot use cohorting: at least 6 feet distance between students in classrooms ²
Sports and extracurricular activities Sports and extracurricular activities occur with at least 6 feet of physical distance to the greatest extent possible ⁵	Sports and extracurricular activities Sports and extracurricular activities occur with at least 6 feet of physical distance required ⁵	Sports and extracurricular activities Sports and extracurricular activities occur only if they can be held outdoors, with more than 6 feet of physical distancing ⁵	



IDPH Metrics Targets

- County Level COVID-Risk Metrics
 - Blue indicates county is experiencing overall stable COVID-19 metrics
 - Orange indicates there are warning signs of increased COVID-19 risk in the county
- County – Metrics for School Determination of Community Spread
 - Test positivity target: less than or equal to 5%
 - New Cases Per 100,000 target: less than 50 per 100,000
 - New Cases: target is decreasing or stable data
 - Youth Cases: target is decreasing or stable data
 - Hospital visit and admissions related to COVID



Options to Consider for Masks

Universal Masking – All wear masks regardless of vaccination

Non-Vaccinated Masking – Only required those who are not vaccinated to wear masks when indoors. Other preventative measures in place.

Masks should be worn indoors by all individuals (age 2 and older) who are not fully vaccinated– Families can decide if they want their student to wear a mask. This can be phased to more mask use based on the metrics.



District Recommendations

- Full day in-person learning – traditional school day
- The District will implement a phased masking plan in school based on the metrics.
 - Start of the school year: Masks should be worn indoors by all individuals (age 2 and older) who are not fully vaccinated. **Masks are optional.**
 - Families can decide if they want their student to wear a mask.
- Masks are required on all school buses
- Social distancing will be 3 feet or < to ensure all students have access to in-person learning
- Full lunch service will be provided
- Vaccinations not required, but highly encouraged
- Contact tracing will continue. Individuals who are within 6 feet of an individual diagnosed with COVID will need to quarantine **unless**
 - The person directly exposed is vaccinated OR
 - **Both** the individual diagnosed, and the person directly exposed are both wearing masks
- COVID-19 screening testing under further consideration
- COVID-19 Metrics monitored on a consistent basis
- Athletics will follow IHSA and IDPH sports guidance

Recommended Phased in Plan

Recommended Phase at the start of 2021-22 School Year.

Minimal/Low Metrics Data

Mask Optional
3 or < feet distancing

Moderate Metrics Data

Masks required for non-vaccinated individuals

High/Substantial Metrics Data

Universal Masking
Consider increasing social distancing

Individual schools, levels, or the full district may move between phases, if needed



Next Steps

Once a plan is approved

- Communicate plan to the staff and community
- Update Back to School 20-21 website including the [District School Health and Safety and COVID-19](#) page
- Update parent and staff COVID-19 handbooks with detailed information
- Update any procedures related to changes to the district plan
- Continue to review guidelines from CDC, IDPH, ISBE, Will and Kendall Co., and IHSA.
- Monitor metrics