

PLAINFIELD SD202 COVERS

64-square miles

serves parts of
7 communities

Plainfield SD202 is the

5th largest

district in
the state

31 Schools



1 preschool



18 elementary



7 middle

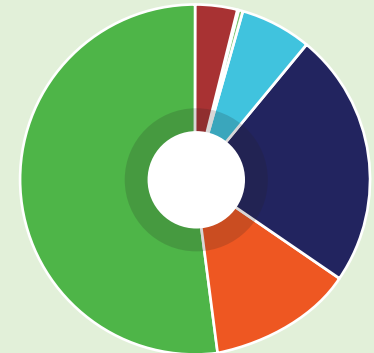
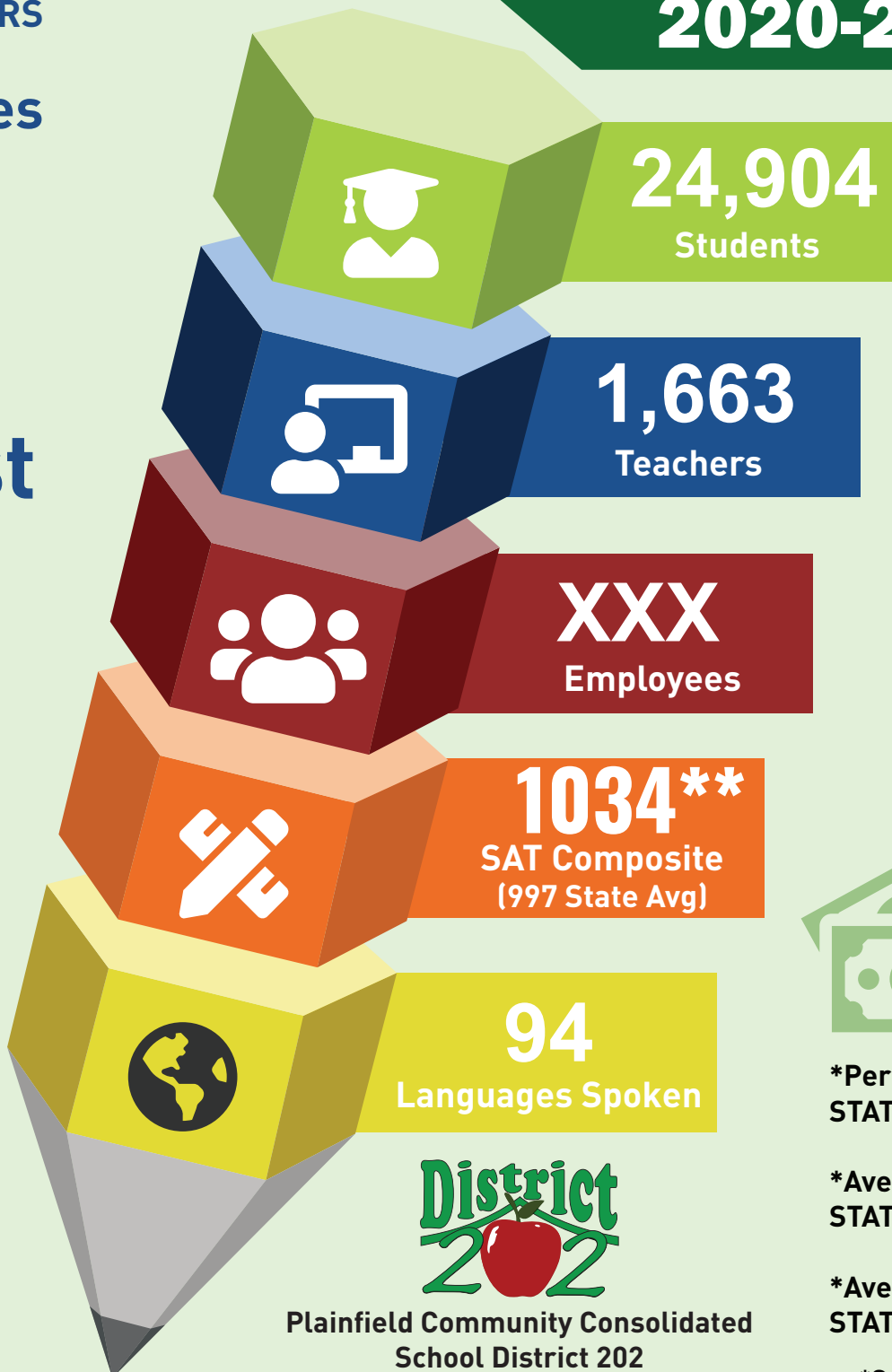


4 high



1 alternative

2020-21 FAST FACTS



50%
46%
25%
7%
4%
0.3%
0.01%

White
Black or African-American
Hispanic or Latino
Asian
Two or More Races
American Indian or Alaska Native
Native Hawaiian or Other Pacific Islander



\$297.8
million operating budget

*Per-pupil operating expense..... \$11,436
STATE Average..... \$14,492

*Average Teacher Salary \$57,900
STATE Average \$68,083

*Average Administrator Salary... \$95,075
STATE Average \$111,293

*Source: 2019-20 Illinois State Report Card
**2020 SAT scores are not yet available.



Plainfield Community Consolidated
School District 202
www.psd202.org